

# Patons Grace



## TULIP LACE DRESS WITH BLANKET

### SIZES

#### DRESS

##### Chest measurement

6 mos	17	ins	[ 43	cm ]
12 mos	19	ins	[ 48	cm ]
18 mos	21	ins	[ 53.5	cm ]
2 yrs	21½	ins	[ 54.5	cm ]
3 yrs	22½	ins	[ 57	cm ]

##### Finished chest

6 mos	18½	ins	[ 47	cm ]
12 mos	21	ins	[ 53.5	cm ]
18 mos	23	ins	[ 58.5	cm ]
2 yrs	24	ins	[ 61	cm ]
3 yrs	25½	ins	[ 65	cm ]

**BLANKET:** Approx 39¼ x 42 ins [100.5 x 107 cm].

### MATERIALS

**Patons Grace** (50 g/1.75 oz)

#### DRESS

**Sizes 6 m 12 m 18 m 2 yrs 3 yrs**

**Main Color (MC) (White)**

4 4 4 5 5 balls

**Contrast A (Pink)**

1 1 2 2 2 ball(s)

**Contrast B (Green)**

1 1 1 1 1 ball

#### BLANKET

**Main Color (MC) (White)** 10 balls

**Contrast A (Pink)** 6 balls

**Contrast B (Green)** 1 ball

Sizes 3.25 mm (U.S. 3) and 4 mm (U.S. 6) knitting needles. Sizes 3.25 mm (U.S. 3) and 4 mm (U.S. 6) circular knitting needles 36 ins [90 cm] long **or sizes needed to obtain tension.** 2 buttons and 4 small metal snap fasteners for Dress.

### TENSION

22 sts and 30 rows = 4 ins [10 cm] in stocking st with larger needles.

### ABBREVIATIONS

**MB** = [(K1. yfwd) 3 times. K1] all in next st. Slip 6th, 5th, 4th, 3rd, 2nd and first sts separately over 7th st. One st rem. Bobble complete.

### INSTRUCTIONS

#### DRESS

*The instructions are written for smallest size. If changes are necessary for larger sizes, the instructions will be written thus ( ).*

**Note:** When working from chart, carry colors not in use loosely across WS of work. The colors are never twisted around one another.

#### FRONT

\*\*With A and larger needles, cast on 87 (87-91-91-110) sts.

Beg with a knit row, work 4 rows stocking st.

**Next row:** (RS). (Fold line). K1 (1-1-1-2). \*K2tog. yfwd. Rep from \* to last 2 sts. K2.

Beg with a purl row, work 5 rows stocking st.

Work Chart I in stocking st to end of chart, noting 4 st rep will be worked 21 (21-22-22-27) times. Break A and B.

With MC, work 4 rows stocking st.

Proceed in Tulip Lace Pat as follows:

**1st row:** (RS). K5. \*K2tog. yfwd. K1. yfwd. Sl1. K1. pssso.\*\* K13 (13-14-14-14). Rep from \* to last 10 sts. Rep from \* to \*\* once. K5.

**2nd and alt rows:** Purl.

**3rd row:** K4. \*K2tog. yfwd. K3. yfwd. Sl1. K1. pssso.\*\* K11 (11-12-12-12). Rep from \* to last 11 sts. Rep from \* to \*\* once. K4.

**5th row:** K3. \*(K2tog. yfwd) twice. K1. (yfwd. Sl1. K1. pssso) twice.\*\* K9 (9-10-10-10). Rep from \* to last 12 sts. Rep from \* to \*\* once. K3.



ABBREVIATIONS: [www.patonsyarns.com/glossary](http://www.patonsyarns.com/glossary)

**7th row:** K2. \*(K2tog. yfwd. K1) twice. (yfwd. Sl1. K1. pssso. K1) twice.\*\* K6 (6-7-7-7). Rep from \* to last 13 sts. Rep from \* to \*\* once. K1.

**9th row:** K1. \*K2tog. yfwd. K2. K2tog. yfwd. K1. yfwd. Sl1. K1. pssso. K2. yfwd. Sl1. K1. pssso.\*\* K5 (5-6-6-6). Rep from \* to last 14 sts. Rep from \* to \*\* once. K1.

**11th row:** K4. \*K2tog. yfwd. K3. yfwd. Sl1. K1. pssso.\*\* K11 (11-12-12-12). Rep from \* to last 11 sts. Rep from \* to \*\* once. K4.

**13th row:** K3. \*K2tog. yfwd. K5. yfwd. Sl1. K1. pssso. K9 (9-10-10-10).\*\* Rep from \* to last 12 sts. Rep from \* to \*\* once. K3.

**15th row:** K2. \*K2tog. yfwd. K1. yfwd. Sl1. K1. pssso. K1. K2tog. yfwd. K1. yfwd. Sl1. K1. pssso.\*\* K7 (7-8-8-8). Rep from \* to last 13 sts. Rep from \* to \*\* once. K2.

**17th row:** K1. \*K2tog. yfwd. K1. MB. K1. yfwd. Sl1. K2tog. pssso. yfwd. K1. MB. K1. yfwd. Sl1. K1. pssso.\*\* K5 (5-6-6-6). Rep from \* to last 14 sts. Rep from \* to \*\* once. K1.

**19th row:** K7. \*MB. K17 (17-18-18-18). Rep from \* to last 8 sts. MB. K7.

**20th row:** Purl.

These 20 rows complete lace pat.

Proceed in eyelet pat as follows:

**1st row:** (RS). Knit.

**2nd and alt rows:** Purl.

**3rd row:** Knit.

**5th row:** K2 (2-4-4-4). \*K2tog. yfwd. K7. Rep from \* to last 4 (4-6-6-7) sts. K2tog. yfwd. K2 (2-4-4-5).

**7th and 9th rows:** Knit.

**11th row:** K6 (6-8-8-8). \*K2tog. yfwd. K7. Rep from \* to last 0 (0-2-2-3) sts. K0 (0-2-2-3).

**12th row:** Purl.

These 12 rows form eyelet pat.

Cont in eyelet pat shaping sides by dec 1 st each end of needle on next and following alt 2nd (4th-4th-4th-4th) rows until there are 51 (69-69-79-70) sts.

**Sizes 12, 18 mos and 2 yrs only:** Cont in eyelet pat, dec 1 st each end of needle on following alt rows until there are (57-63-67) sts.

**All Sizes:** Cont even in eyelet pat until work from fold line measures 10½ (11½-13-14¼-15½) ins [26.5 (29-33-36-39.5) cm], ending with RS facing for next row.

**Shape armholes:** Keeping cont of pat, cast off 2 (3-4-4-4) sts beg next 2 rows. 47 (51-55-59-62) sts.

Dec 1 st each end of needle on next and every following alt row to 43 (45-49-51-54) sts.\*\*

Work a further 9 rows in pat, ending with RS facing for next row.

**Shape neck: Next row:** Pat across 16 (17-19-19-20) sts (neck edge). **Turn.** Leave rem sts on a spare needle.

Work 1 row even in pat.

Keeping cont of pat, dec 1 st at neck edge on next and following alt rows until there are 11 (12-13-13-14) sts.

Work 7 (9-9-9-11) rows even in pat. Cast off.

With RS of work facing, slip next 11 (11-11-13-14) sts from spare needle onto a st holder. Join yarn to rem sts and pat to end of row.

Work to correspond to other side.

## BACK

Work from \*\* to \*\* as given for Front.

Work a further 17 (17-19-19-19) rows in pat, ending with RS facing for next row.

**Shape neck: Next row:** Pat across 14 (15-17-17-18) sts (neck edge). **Turn.** Leave rem sts on a spare needle.

Work 1 row even in pat.

Keeping cont of pat, dec 1 st at neck edge on next and following alt rows until there are 11 (12-13-13-14) sts.

Work 9 rows even in pat.

**Shape Strap:** Cont in stocking st dec 1 st each end of next row. 9 (10-11-11-12) sts. Place a marker at each end of last row.

Purl 1 row.

**Next row:** Sl1. K1. pssso. K1 (2-2-2-3). K2tog. yfwd. K2 (2-3-3-3). K2tog. (buttonhole made). 7 (8-9-9-10) sts.

Purl 1 row.

Dec 1 st each end of next row. 5 (6-7-7-8) sts.

Purl 1 row. Cast off.

With RS of work facing, slip next 15 (15-15-17-18) sts from spare needle onto a st holder. Join yarn to rem sts and pat to end of row.

Work to correspond to other side.

## FINISHING

**Back Edging:** With RS of work facing, A and smaller circular needle, pick up and knit 34 (38-40-42-44) sts up right back armhole edge to marker on strap. Pick up and knit 14 (15-16-16-17) sts around end of Strap to opposite marker. Pick up and knit 11 (11-13-13-13) sts down right back neck edge. K15 (15-15-17-18) from Back st holder. Pick up and knit 11 (11-13-13-13) sts up left back neck edge to marker on left strap. Pick up and knit 14 (15-16-16-17) sts around end of Strap to opposite marker. Pick up and knit 34 (38-40-42-44) sts down left back armhole edge. 133 (143-153-159-166) sts.

Beg with a purl row, work 3 rows stocking st.

**Next row:** (RS). K1. \*K2tog. yfwd. Rep from \* to last 2 (2-2-2-1) st(s). K2 (2-2-2-1) (fold line).

Beg with a purl row, work 3 rows stocking st. Cast off.

**Front Neck Edging:** With RS of work facing, A and smaller needles, pick up and knit 16 (18-20-20-22) sts down left front neck edge. K11 (11-11-13-14) from front st holder. Pick up and knit 16 (18-20-20-22) sts up right front neck edge. 43 (47-51-53-58) sts. Beg with a purl row, work 3 rows stocking st.

**Next row:** (RS). K1. \*K2tog. yfwd. Rep from \* to last 2 (2-2-2-1) st(s). K2 (2-2-2-1) (fold line).

Beg with a purl row, work 3 rows stocking st. Cast off.

**Front Armhole Edging:** With RS of work facing, A and smaller needles, pick up and knit 30 (34-36-38-40) sts up left front armhole from side seam to cast off edge.

Beg with a purl row, work 3 rows stocking st.

**Next row:** (RS). K1. \*K2tog. yfwd. Rep from \* to last st. K1. (fold line).

Beg with a purl row, work 3 rows stocking st. Cast off.

Rep on right front armhole edge, beg at cast off edge and ending at side seam.

Sew side and armhole edging seams. Fold all edgings to WS along fold line and sew in position. Sew on buttons to correspond to buttonholes. Sew 1 set of snap fasteners on either side of button on Straps.

## BLANKET

### Center Section

With MC and larger needles, cast on 148 sts.

Beg with a knit row, work 2 rows stocking st.

\*\*\*Proceed in Tulip Lace Pat for 20 rows as given for size 18 mos of Front of Dress.

Proceed in eyelet pat as follows:

**1st row:** (RS). Knit.

**2nd and alt rows:** Purl.

**3rd row:** Knit.

**5th row:** K9. \*K2tog. yfwd. K7. Rep from \* to last 4 sts. K4.

**7th and 9th rows:** Knit.

**11th row:** K4. \*K2tog. yfwd. K7. Rep from \* to end of row.

**13th and 15th rows:** Knit.

**16th row:** Purl.\*\*\*

Rep from \*\*\* to \*\*\* 4 times more.

Work a further 20 rows in Tulip Lace Pat.

Beg with a knit row, work 2 rows stocking st.

Cast off.

### Side Sections

With MC and larger circular needle, pick up and knit 156 sts along side of Center Section.

Purl 1 row.

Work Chart II in stocking st to end of chart reading **knit** rows from **right** to left and **purl** rows from **left** to right, noting side incs on 3rd row of chart. 158 sts.

With A, cont in stocking st inc 1 st each end of next and following alt rows until there are 194 sts.

Purl 1 row.

**Next row:** (RS). K1. \*K2tog. yfwd. Rep from \* to last st. K1 (fold line).

Purl 1 row.

Dec 1 st each end of needle on next and following alt rows until there are 156 sts.

Purl 1 row. Cast off.

Rep on opposite side edge.

### Top or Bottom Sections

With MC and larger circular needle, pick up and knit 148 sts across top of Center Section.

Purl 1 row.

Work Chart II in stocking st to end of chart reading **knit** rows from **right** to left and **purl** rows from **left** to right, noting side incs on 3rd row of chart. 150 sts.

With A, cont in stocking st inc 1 st each end of next and following alt rows until there are 186 sts.

Purl 1 row.

**Next row:** (RS). K1. \*K2tog. yfwd. Rep from \* to last st. K1 (fold line).

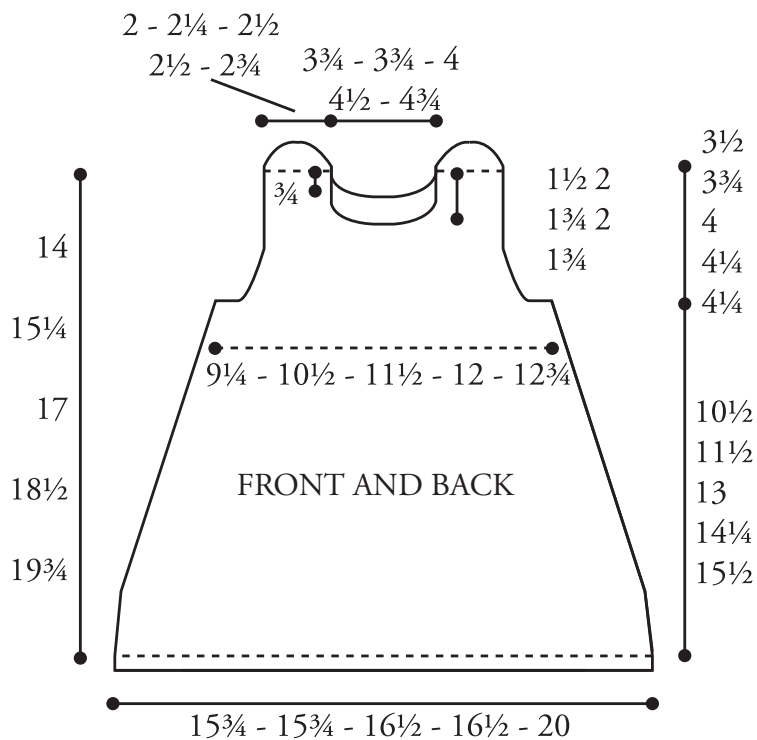
Purl 1 row.

Dec 1 st each end of needle on next and following alt rows until there are 148 sts.

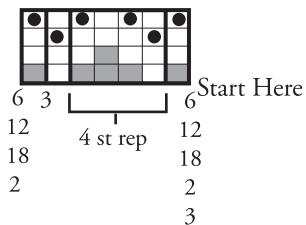
Purl 1 row. Cast off.

Rep on bottom of Center Section.

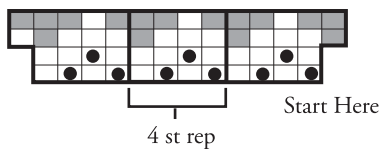
Sew 4 corner seams. Fold to WS along fold line and sew in position.



**CHART I**



**CHART II**



**Key**

- = MC
- = Contrast A
- = Contrast B

**Patons**

*... a part of your life.*

P.O. Box 40, Listowel ON N4W 3H3