

Shoulder Shrug

STEP 2



INTERMEDIATE

Once the basic cable has been mastered, it can be used to make several variations: This design combines 3 different scales of the same type of “braided” cable with differing stitch widths and row lengths.




SIZES

To fit bust measurement	
Extra-Small/Medium	
28-38 ins	[71-96.5 cm]
Large/2 Extra-Large	
40-50 ins	[101.5-127 cm]
3/5 Extra-Large	
52-62 ins	[132-157.5 cm]

TENSION

15 sts and 20 rows = 4 ins [10 cm] in stocking st.

MATERIALS

Patons® Shetland Chunky (100 g / 3.5 oz) (110 m / 121 yds)				
SIZES	XS/M	L/2XL	3/5XL	
 03046 (Oxford Grey)	4	4	5	balls
Size 6 mm (U.S. 10) knitting needles. Size 6 mm (U.S. 10) circular knitting needle 24 ins [60 cm] long or size needed to obtain tension. Cable needle.				

STITCH GLOSSARY

Alt = Alternate(ing).

Beg = Beginning.

Cont = Continue(ity).

K = Knit.

K2tog = Knit next 2 stitches together.

M1P = Make 1 stitch by picking up horizontal loop lying before next stitch and purling into back of loop.

P = Purl.

P2tog = Purl next 2 stitches together.

Pat = Pattern.

Rem = Remaining.

Rep = Repeat.

Rnd(s) = Round(s).

RS = Right side.

Sl1 = Slip next stitch.

St(s) = Stitch(es).

Toe = Together.

WS = Wrong side.

CABLES USED IN PATTERN

C4B (Cable 4 Back) (See Diagrams on page 31).

Slip next 2 stitches onto cable needle and leave at back of work.

Knit next 2 stitches from left-hand needle, skipping stitches on cable needle.

Knit 2 stitches from cable needle. Cable C4B is complete.

C4F (Cable 4 Front) (See Diagrams on page 31).

Slip next 2 stitches onto cable needle and leave at front of work.

Working behind cable needle, knit next 2 stitches from left-hand needle.

Knit 2 stitches from cable needle. Cable C4F is complete.

C6B (Cable 6 Back) (See Diagrams on page 32).

Slip next 3 stitches onto cable needle and leave at back of work.

Knit next 3 stitches from left-hand needle, skipping stitches on cable needle.

Knit 3 stitches from cable needle. Cable C6B is complete.

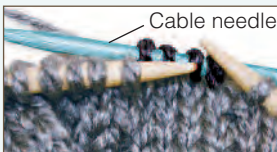
C6F (Cable 6 Front) (See Diagrams on page 32).

Slip next 3 stitches onto cable needle and leave at front of work.

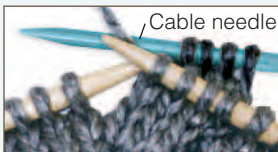
Working behind cable needle, knit next 3 stitches from left-hand needle.

Knit 3 stitches from cable needle. Cable C6F is complete.

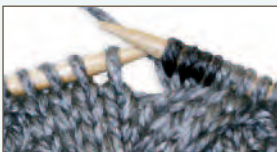
C8B (Cable 8 Back)



Slip next 4 stitches onto cable needle and leave at back of work.



Knit next 4 stitches from left-hand needle, skipping stitches on cable needle.



Knit 4 stitches from cable needle. Cable C8B is complete.

C8F (Cable 8 Front) (See Diagrams on page 30).

Slip next 4 stitches onto cable needle and leave at front of work.

Working behind cable needle, knit next 4 stitches from left-hand needle.

Knit 4 stitches from cable needle. Cable C8F is complete.

INSTRUCTIONS

PANEL PAT A

(worked over 6 sts).

1st row: K2. **C4F.**


2nd row: P6.

3rd row: **C4B.** K2.

4th row: P6.

These 4 rows form Panel Pat A.

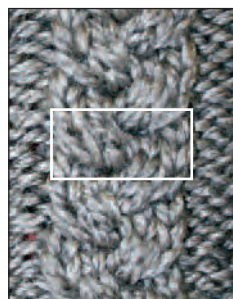
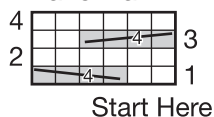
Key

 = Knit on RS rows
and purl on WS rows.

 = C4B

 = C4F

Panel Pat A



PANEL PAT B

(worked over 9 sts).

1st row: K3. **C6F.**

2nd and alt rows: P9.

3rd row: K9.

5th row: **C6B.** K3.

7th row: K9.

8th row: P9.

These 8 rows form Panel Pat B.

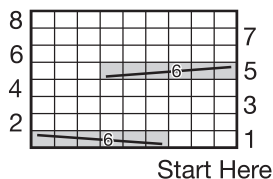
Key

 = Knit on RS rows
and purl on WS rows.

 = C6B

 = C6F

Panel Pat B



PANEL PAT C

(worked over 12 sts).

1st row: K4. **C8F.**

2nd and alt rows: P12.

3rd and 5th rows: K12.

7th row: **C8B.** K4.

9th and 11th rows: K12.

12th row: P12.

These 12 rows form Panel Pat C.

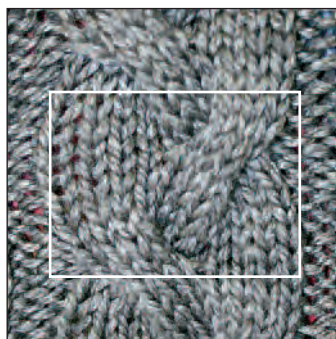
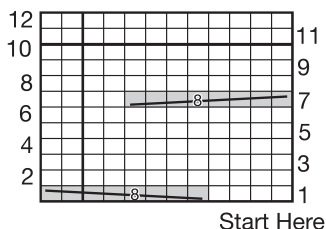
Key

 = Knit on RS rows
and purl on WS rows.

 = C8B

 = C8F

Panel Pat C



INSTRUCTIONS

The instructions are written for smallest size. If changes are necessary for larger sizes the instructions will be written thus (). Numbers for each size are shown in the same color throughout the pattern. When only one number is given in black, it applies to all sizes.

CABLE SECTION

With pair of needles, cast on 44 sts.

Foundation row: (WS). K3. [(P3. M1P) twice. P4. K2] twice. (P2. M1P) twice. P3. K2. P2. M1P. P3. K3. 51 sts.

1st row: P3. Work 1st row of **Panel Pat A** across next 6 sts. P2. Work 1st row of **Panel Pat B** across next 9 sts. (P2. Work 1st row of **Panel Pat C** across next 12 sts) twice. P3.

2nd row: K3. (Work 2nd row of **Panel Pat C** across next 12 sts. K2) twice. Work 2nd row of **Panel Pat B** across next 9 sts. K2. Work 2nd row of **Panel Pat A** across next 6 sts. K3. Place marker to indicate top edge. Panel Pats A, B and C are now in position.

Tip: When working several Cable Panels (Panel Patterns) with different amounts of row repeats, after working one full repeat of shortest Cable Panel, begin again with 1st row, AT THE SAME TIME, continue working in longer Cable Panels until they also have been completed, then begin each Cable Panel all over again.

Cont in pat until work from beg measures approx **44 (53-61)** ins [**112 (134.5-155)** cm], ending on a 7th row of Panel Pat C.

Next row: (WS). K3. [(P2. P2tog) twice. P4. K2] twice. (P2. P2tog) twice. P1. K2. P2. P2tog. P2. K3. 44 sts.

Cast off in pat.

Sew cast on and cast off edges tog.

YOKE SECTION

With RS facing and circular needle, beg at center back seam, pick up and knit **132 (168-192)** sts around top edge of Cable Section. Join in rnd, placing a marker on first st.

1st and 2nd rnds: Purl.

3rd and 4th rnds: Knit.

Rep last 4 rnds Ridge Pat once more, then rep 1st and 2nd rnds once more.

Shape top: 1st rnd: *K4. K2tog. Rep from * around. **110 (140-160)** sts.

2nd to 4th rnds: Work even in Ridge Pat.

5th rnd: *K8 (5-6). K2tog. Rep from * around. **99 (120-140)** sts.

6th to 8th rnds: Work even in Ridge Pat.

9th rnd: *K7 (4-5). K2tog. Rep from * around. **88 (100-120)** sts.

10th rnd: Knit.

11th rnd: *P9 (8-4). P2tog. Rep from * around. **80 (90-100)** sts.

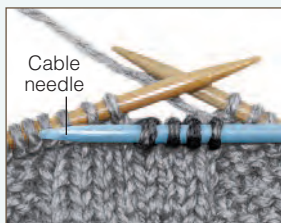
Cast off purlwise.

Lower edging: With RS facing and circular needle, pick up and knit **170 (190-210)** sts around lower edge of Cable Section. Join in rnd, placing a marker on first st.

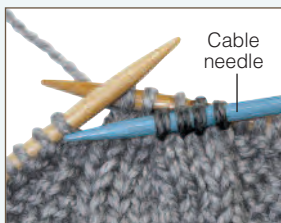
1st rnd: Purl.

Cast off purlwise. 

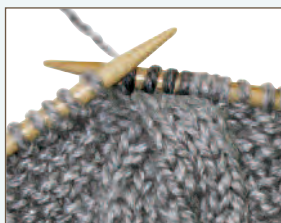
C8F (Cable 8 Front)



Slip next 4 stitches onto cable needle and leave at front of work.



Working behind cable needle, knit next 4 stitches from left-hand needle.



Knit 4 stitches from cable needle. Cable C8F complete.